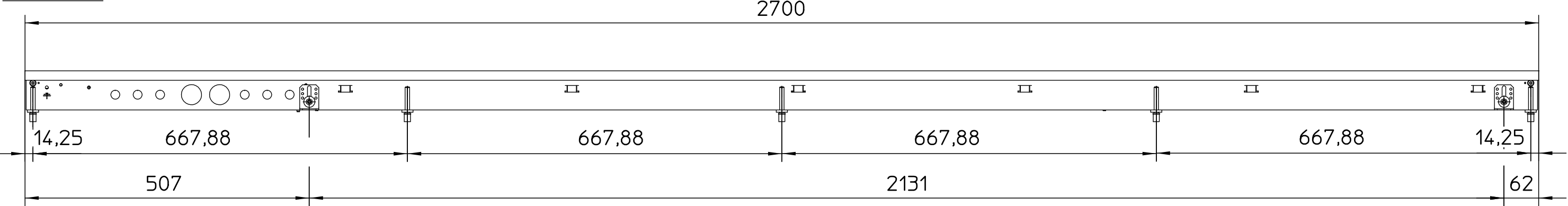
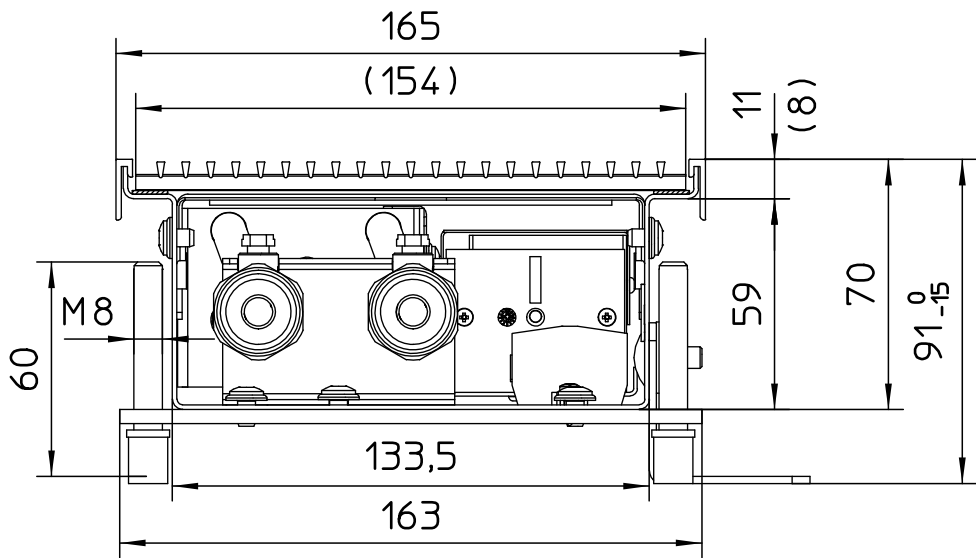


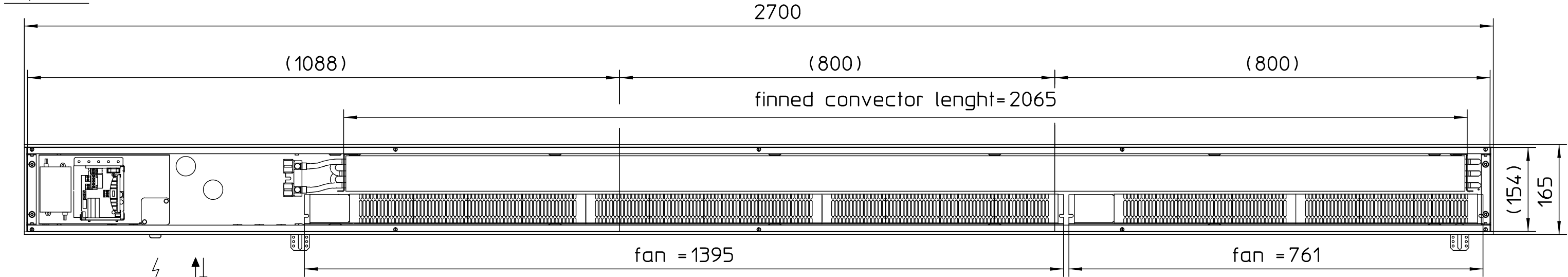
Front view



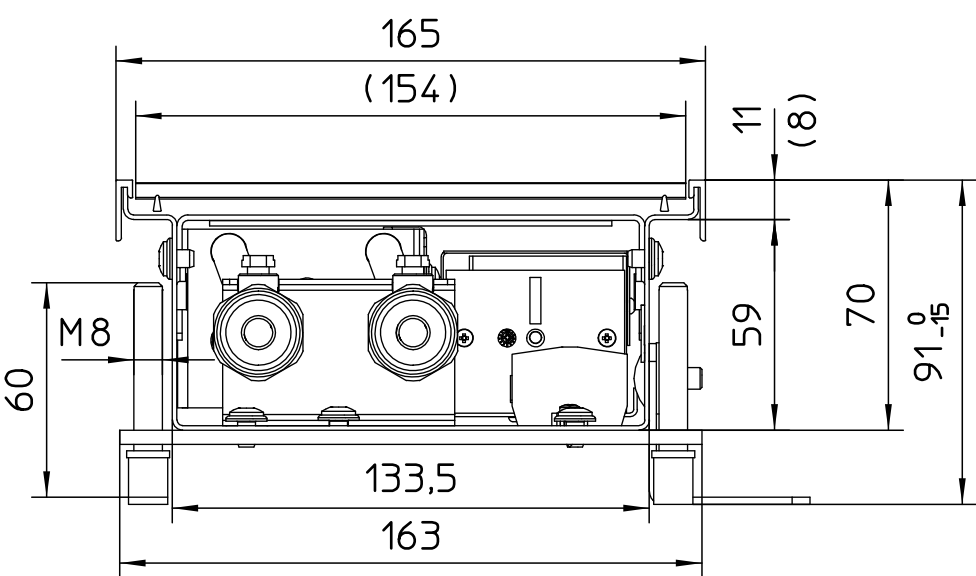
Cross section
with linear-grille



Top view



Cross section
with orthogonal-grille



Room side

IMPORTANT:

Height to be checked on site!

↕ Holes for water connections

⚡ Electric connection/Cable inlet

Dimensions = Overall frame dimensions

Dimensions in brackets = Grill dimensions

Drawing approved for
manufacture
Dimensions have been changed

Date Stamp/Signature

1/2" female BSP

Please mark:

Type linear-grille

Type orthogonal-grille

| | | | | | |
|--|--------------------------|-----------|-------------|---------------------|----------------|
| Anzahl | Stammteil-Nr. | Index | Änderung | Name | Datum |
| Stamm-Nr. | Folge-Nr. | | | | |
| Projekt-Nr. | Erst. 06.12.16 jterfehr | Format 2 | Art-Gr. 442 | SAP-Nr. | CAD-Nr. 707137 |
| Auftr.-Nr. | Änder. 06.12.16 jterfehr | | | | Vers. 1 |
| STL-Nr. | Gepr. | Werkstoff | Nr. | Zul.Abw. ISO 2768-m | Revision |
| | Freig. | M 1:7 | Abm. | Angebot | Bl. |
| View Katherm QK nano W=165mm, H=070mm NP2700mm Katherm QK nano | | | | | |